



OCTOPUS



REV A
June 4, 2008

SELECTION GUIDE

HYDRAULIC DRIVE UNITS - ACCESSORIES & SERVICE PARTS

A. POWER BOATS

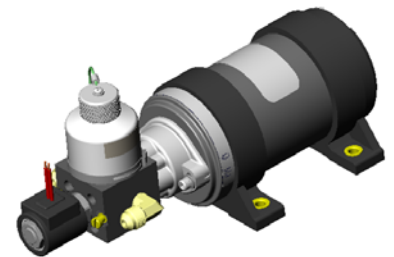
i. Reversing Pumps

- How To Order

OCT-AF-12-12-1706-HK		
Product Code (not always used)	OCT	Type of Accessory HK = SAE Hose Kit UB = Unbalanced Valve**
Market Code AF = Aftermarket OE = OEM	AF	Type of Manifold - Ports 1703 = 1/4 NPT * 1704 = 1/4 SAE 17141 = 1/4 NPT - Shut Off 1706 = 1/4 SAE - Shut Off BP12 = 12v # 8 Bypass Valve BP24 = 24v # 8 Bypass Valve
Max Flow Per Min 10 = 1000 cc (60 ci) 12 = 1200 cc (73 ci) 20 = 2000 cc (120 ci)	Volts DC 12 = 12v 24 = 24v 32 = 32v	



Reversing Pump



Sailboat Bypass Reversing Pump

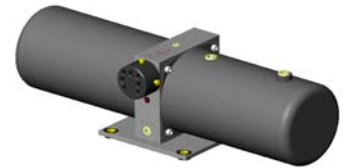
* 1703 Manifold includes 3/8 dia compression fittings

** UB - Unbalanced Valve fits to pump to adapt flow to unbalanced steering cylinder

ii. Type A Continuous Running Pumps

- How To Order

OCT-AF-CRA-02-12-P		
Product Code (not always used)	OCT	Type of Accessory P = Pressure Gauge F = Flow Control* R = Relief Valve
Market Code AF = Aftermarket OE = OEM	AF	Volts DC 12 = 12v 24 = 24v 32 = 32v
Model Type	CRA	
Flow Per Min 02 = 2000 cc (120 ci) 03 = 3000 cc (180 ci) 04 = 4000 cc (240 ci)		



CRA Pump

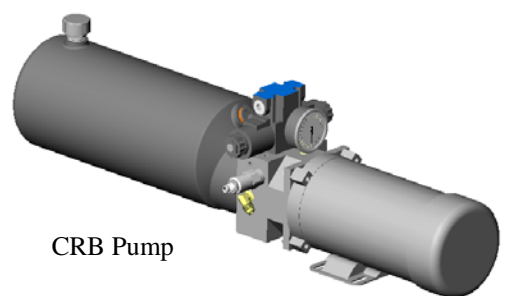
* Flow Control Option only available on 2000cc (120 ci) flow models

FROM OCTOPUS – A division of Canada Metal Pacific Ltd - Vancouver Canada
TEL 604 940 2010 - FAX 604 952 2650

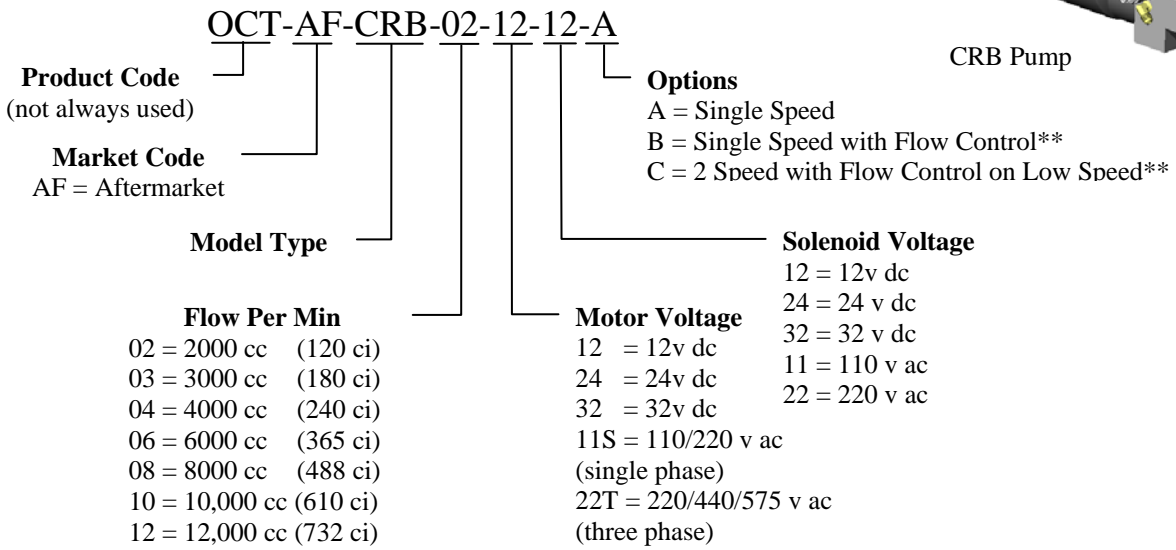
HYDRAULIC DRIVE UNITS - ACCESSORIES & SERVICE PARTS
SELECTION GUIDE (continued)

ii. Type B Continuous Running Pumps

- How To Order



CRB Pump

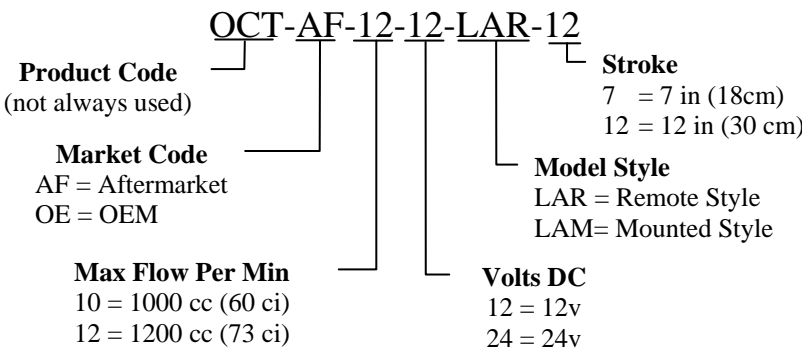


* Flow Rates are approximate depending upon motor selection
** Option B & C not available on all Flow Rates – Consult Factory

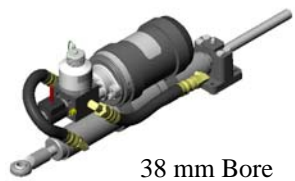
B. SAIL BOATS

i. 38mm Bore Linear Drives

- How To Order



38mm Bore Linear Drive Remote Style



38 mm Bore Linear Drive Mounted Style

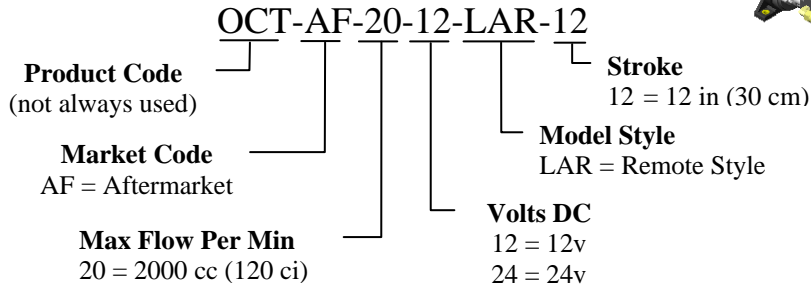
38mm BORE - SPECIFICATIONS AND DIMENSIONS							
Stroke		Tiller Radius for +/- 35 degrees		Peak Thrust		Stroke Time	Common Vessel Application
in	cm	in	cm	lbs	kg	Seconds	
7	18	6	15	880	400	8	Up to 45ft (14m)
12	30	10	25	880	400	14	Up to 60 ft (18m)

FROM OCTOPUS – A division of Canada Metal Pacific Ltd - Vancouver Canada
TEL 604 940 2010 - FAX 604 952 2650

HYDRAULIC DRIVE UNITS - ACCESSORIES & SERVICE PARTS
SELECTION GUIDE (continued)

ii. 45mm Bore Linear Drive

- How To Order

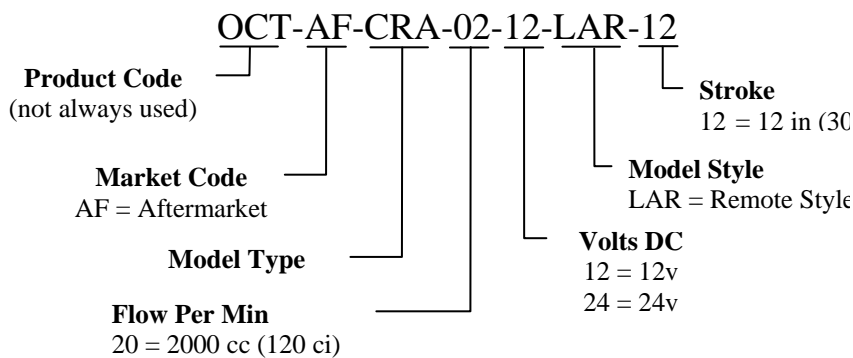


45mm Bore
Linear Drive
Remote Style

45mm BORE - SPECIFICATIONS AND DIMENSIONS							
Stroke		Tiller Radius for +/- 35 degrees		Peak Thrust		Stroke Time	Common Vessel Application
in	cm	in	cm	lbs	kg	Seconds	
12	30	10	25	1320	600	16	Over 60 ft (18m)

iii. Heavy Duty 45mm Bore Linear Drive

- How To Order



45mm Bore
Heavy Duty
Linear Drive
Remote Style

HEAVY DUTY - 45mm BORE - SPECIFICATIONS AND DIMENSIONS							
Stroke		Tiller Radius for +/- 35 degrees		Peak Thrust		Stroke Time	Vessel Application
in	cm	in	cm	lbs	kg	Seconds	
12	30	10	25	1320	600	16	Up to 80 ft (24m)

FROM OCTOPUS – A division of Canada Metal Pacific Ltd - Vancouver Canada
TEL 604 940 2010 - FAX 604 952 2650

HYDRAULIC DRIVE UNITS - ACCESSORIES & SERVICE PARTS
SELECTION GUIDE (continued)

C. MODULAR ACCESSORY KITS

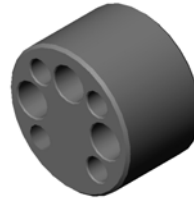
i. For Reversing Pumps

a. Manifolds

- How To Order

For ¼ NPT Ports – Order OC17SUK12

For ¼ SAE Ports – Order OC17SUK13



Reversing Pump
Manifold

b. Shut Off Valve Manifolds

- How To Order

For ¼ NPT Ports – Order OC17SUK04

For ¼ SAE Ports – Order OC17SUK05

Reversing Pump
Shut Off Valve
Manifold

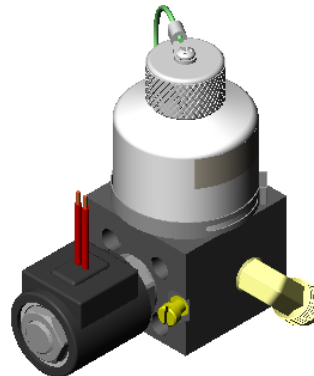


c. # 8 Bypass Valve Manifolds

- How To Order

For 12 volts dc – Order OC17SUK01

For 24 volts dc – Order OC17SUK02



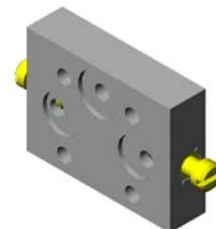
Reversing Pump
8 Bypass Valve
Manifold

d. Unbalanced Valve

- How To Order

For All Reversing Pump – Order OC17SUK03

Unbalanced Valve



FROM OCTOPUS – A division of Canada Metal Pacific Ltd - Vancouver Canada
TEL 604 940 2010 - FAX 604 952 2650

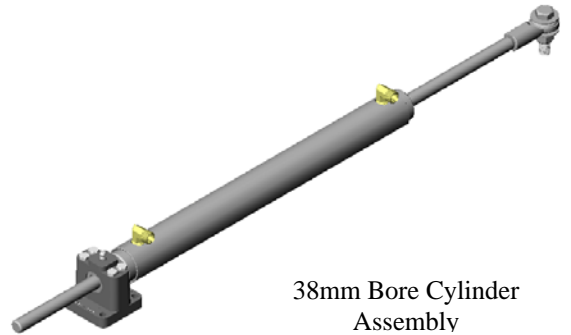
HYDRAULIC DRIVE UNITS - ACCESSORIES & SERVICE PARTS
SELECTION GUIDE (continued)

ii. For Linear Drives

a. 38mm Bore Cylinder Assemblies

▪ How To Order

For 7 inch (18cm) stroke – Order OC16SUK05
For 12 inch (30cm) stroke – Order OC16SUK06

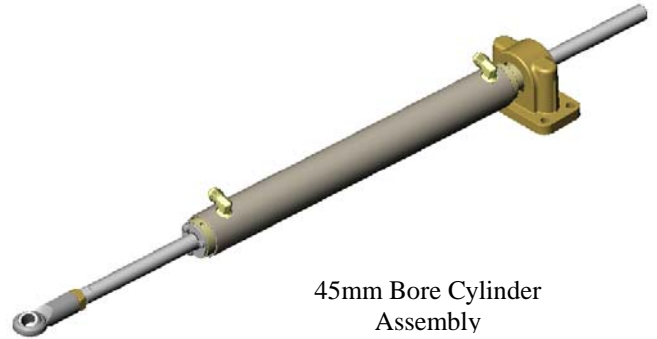


38mm Bore Cylinder
Assembly

b. 45mm Bore Cylinder Assemblies

▪ How To Order

For 12 inch (30cm) stroke – Order OC16SUK07



45mm Bore Cylinder
Assembly

c. 3/8 Bore - SAE Hose Assemblies
(rotatable SAE female fittings both ends)

▪ How To Order

For 10 inch (26cm) long – Order OC1623
For 12.5 inch (31.5cm) long – Order OC1622
For 24 inch (61cm) long – Order OC1621



3/8 Bore - SAE
Hose Assembly

FROM OCTOPUS – A division of Canada Metal Pacific Ltd - Vancouver Canada
TEL 604 940 2010 - FAX 604 952 2650

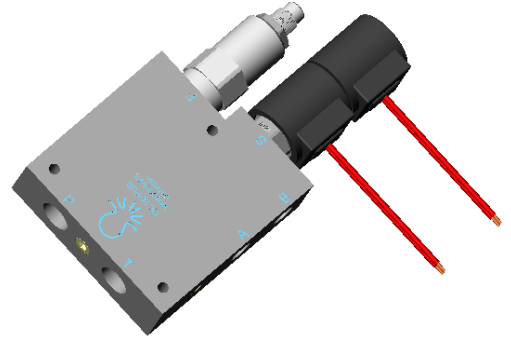
HYDRAULIC DRIVE UNITS - ACCESSORIES & SERVICE PARTS
SELECTION GUIDE (continued)

iii. Miscellaneous

a. Constant Flow Regulator Valve (for adding autopilot steering control to 'Orbitrol' style steering systems)

▪ How To Order

- For 600cc (0.15 gal) nominal flow – 12v – Order OC17SUK19
- For 600cc (0.15 gal) nominal flow – 24v – Order OC17SUK20
- For 2000cc (0.50 gal) nominal flow – 12v – Order OC17SUK17
- For 2000cc (0.50 gal) nominal flow – 24v – Order OC17SUK18
- For 4000cc (1.00 gal) nominal flow – 12v – Order OC17SUK21
- For 4000cc (1.00 gal) nominal flow – 24v – Order OC17SUK22

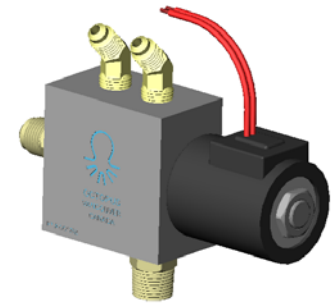


CFR Valve

b. # 10 Bypass Valve (for direct mount onto steering cylinder)

▪ How To Order

- For 12 volts dc - Order OC17SUK15
- For 24 volts dc – Order OC17SUK16



Direct Mount
10 Bypass Valve

c. ¼ Hose Assemblies (for use with reversing pump manifolds)

▪ How To Order

- SAE male fixed – SAE female rotatable x 18” (48cm) - Order OC17SUK06
- NPT male fixed – NPT female fixed x 18” (48cm) - Order OC17SUK07
- NPT male fixed – NPT female fixed x 6” (16cm) - Order OC17SUK08



Typical ¼ Bore
Hose Assembly

FROM OCTOPUS – A division of Canada Metal Pacific Ltd - Vancouver Canada
TEL 604 940 2010 - FAX 604 952 2650

HYDRAULIC DRIVE UNITS - ACCESSORIES & SERVICE PARTS
SELECTION GUIDE (continued)

D. SERVICE PARTS

i. For Reversing Pumps

a. Motor Brush Kit (for all reversing pumps)

- How To Order

For Standard Motor Brush Assy Kit – Order OC17SUK10
For CE (Europe) Motor Brush Assy Kit – Order OC17SUK11



Motor Brush
Assembly

b. Pump Module

- How To Order

For 1000cc/minute Pumpset – Order OC14SUK23
For 1200cc/minute Pumpset – Order OC14SUK24
For 2000cc/minute Pumpset – Order OC14SUK25



Pump Module
Assembly

c. Motor Module

- How To Order

Type 1 - CE (Europe) 12 volt 1000cc/minute Pumpset – Order OC14SUK20
Type 1 - CE (Europe) 12 volt 1200cc/minute Pumpset – Order OC14SUK20
Type 2 - CE (Europe) 12 volt 2000cc/minute Pumpset – Order OC14SUK21
Type 2 - CE (Europe) 24 volt 1000cc/minute Pumpset – Order OC14SUK22
Type 2 - CE (Europe) 24 volt 1200cc/minute Pumpset – Order OC14SUK22
Type 2 - CE (Europe) 24 volt 2000cc/minute Pumpset – Order OC14SUK22
Type 2 - 32 volt 1000cc/minute Pumpset – Order OC14SUK19
Type 2 - 32 volt 1200cc/minute Pumpset – Order OC14SUK19
Type 2 - 32 volt 2000cc/minute Pumpset – Order OC14SUK19



Reversing Pump
Motor Module
Assembly

d. Seal Kit (for all reversing pumps)

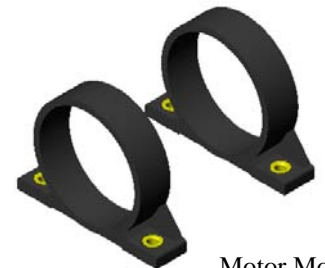
- How To Order

For Reversing Pump Seal Kit – Order OC14SUK26

e. Motor Mount Assembly (“Omega” rubber feet - all reversing pumps)

- How To Order

For Motor Mount Assembly Kit – Order OC14SUK27



Motor Mount
Assy Kit

FROM OCTOPUS – A division of Canada Metal Pacific Ltd - Vancouver Canada
TEL 604 940 2010 - FAX 604 952 2650

HYDRAULIC DRIVE UNITS - ACCESSORIES & SERVICE PARTS
SELECTION GUIDE (continued)

ii. Type A Continuous Running Pumps

a. Motor Brush Kit (for all CRA pumps)

- How To Order

For Motor Brush Assy Kit – Order OC17SUK11

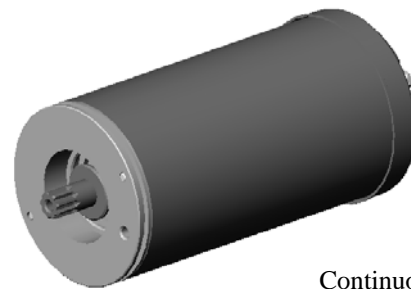


Motor Brush
Assembly

b. Motor Module

- How To Order

For 12 volt CRA Pumpset – Order OC19SUK01
For 24 volt CRA Pumpset – Order OC19SUK02
For 32 volt CRA Pumpset – Order OC19SUK03

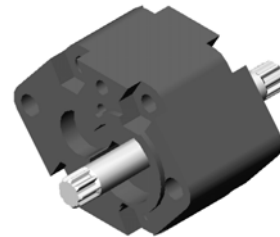


Type A
Continuous Running Pump
Motor Module

c. Pump Module

- How To Order

For 2000cc/minute Pumpset – Order OC19SUK06
For 3000cc/minute Pumpset – Order OC19SUK07
For 4000cc/minute Pumpset – Order OC19SUK08



Type A
Continuous Running Pump
Pump Module

d. Starter Relay

- How To Order

For 12 volt – Order OC1912
For 24 volt – Order OC1913
For 32 volt – Order OC1913



Type A
Continuous Running Pump
Starter Relay

e. Steering Cartridge Valve

- How To Order

For All Pumps – Order OC1920



Type A
Continuous Running Pump
Steering Cartridge Valve

FROM OCTOPUS – A division of Canada Metal Pacific Ltd - Vancouver Canada
TEL 604 940 2010 - FAX 604 952 2650

HYDRAULIC DRIVE UNITS - ACCESSORIES & SERVICE PARTS
SELECTION GUIDE (continued)

f. Steering Control Solenoid Coil

- How To Order

For 12 volt – Order OC1713
For 24 volt – Order OC1714
For 32 volt – Order OC1715



Type A
Continuous Running Pump
Steering Control Solenoid Coil

g. Electrical Circuit Breaker

- How To Order

For 10 amp – Order OC1915
For 15 amp – Order OC1916
For 20 amp – Order OC1917
For 25 amp – Order OC1918
For 30 amp – Order OC1919

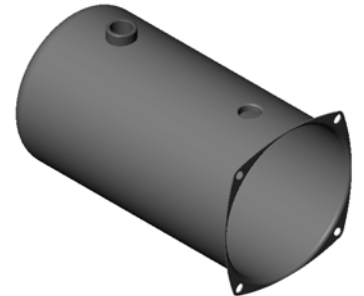


Type A
Continuous Running Pump
Electrical Circuit Breaker

h. Oil Reservoir Tank - Electrical Cover

- How To Order

For Oil Reservoir Tank – Order OC1906
For Electrical Cover – Order OC1906A



Type A
Continuous Running Pump
Oil Reservoir Tank - Electrical Cover

i. Seal Kit (for all Type A continuous running pumps)

- How To Order

For CRA Seal Kit – Order OC19SUK09

iii. Type B Continuous Running Pumps

- a. Consult Factory For All Service Items

iv. For 38mm Bore Linear Drives

- | | | |
|--|---|------------------------|
| <ul style="list-style-type: none"> a. Motor Brush Kit b. Motor Module c. Pump Module d. Pump Seal Kit e. Motor Mount Assembly | } | Same as Reversing Pump |
|--|---|------------------------|

FROM OCTOPUS – A division of Canada Metal Pacific Ltd - Vancouver Canada
TEL 604 940 2010 - FAX 604 952 2650

HYDRAULIC DRIVE UNITS - ACCESSORIES & SERVICE PARTS
SELECTION GUIDE (continued)

f. # 8 Bypass Cartridge Valve

- How To Order

Standard # 8 Valve – Order OC1712



8 Bypass
Cartridge Valve

g. # 8 Bypass Control Solenoid Coil

- How To Order

For 12 volt – Order OC1713
For 24 volt – Order OC1714



38mm Bore Linear Drive
Bypass Control Solenoid Coil

h. Motor Mount Assembly (“figure 8” rubber feet -for Mounted Style)

- How To Order

For Motor Mount Assembly Kit (figure 8” – Order OC16SUK11



38mm Bore Linear Drive
Motor Mount Assembly
(figure 8)

i. 38mm Bore Cylinder Seal Kit

- How To Order

Order OC16SUK08

j. # 8 Bypass Valve Seal Kit

- How To Order

Order OC17SUK14

v. For 45mm Bore Linear Drive

- a. Motor Brush Kit
- b. Motor Module
- c. Pump Module
- d. Pump Seal Kit
- e. Motor Mount Assembly

} Same as Reversing Pump

FROM OCTOPUS – A division of Canada Metal Pacific Ltd - Vancouver Canada
TEL 604 940 2010 - FAX 604 952 2650

HYDRAULIC DRIVE UNITS - ACCESSORIES & SERVICE PARTS
SELECTION GUIDE (continued)

f. # 8 Bypass Cartridge Valve

- How To Order

Standard # 8 Valve – Order OC1712



8 Bypass
Cartridge Valve

g. # 8 Bypass Control Solenoid Coil

- How To Order

For 12 volt – Order OC1713
For 24 volt – Order OC1714



8 Bypass Control
Solenoid Coil

h. 45mm Bore Cylinder Seal Kit

- How To Order

Order OC16SUK09

i. # 8 Bypass Valve Seal Kit

- How To Order

Order OC17SUK14

vi. For Heavy Duty 45mm Bore Linear Drive

- a. Motor Brush Kit
- b. Motor Module
- c. Pump Module
- d. Starter Relay
- e. Steering Cartridge Valve
- f. Steering Control Solenoid Coil
- g. Electrical Circuit Breaker
- h. Oil Reservoir – Electrical Cover
- i. Seal Kit – CRA Pumpset

Same as Type A Continuous Running Pump

FROM OCTOPUS – A division of Canada Metal Pacific Ltd - Vancouver Canada
TEL 604 940 2010 - FAX 604 952 2650

HYDRAULIC DRIVE UNITS - ACCESSORIES & SERVICE PARTS
SELECTION GUIDE (continued)

j. # 10 Bypass Cartridge Valve

- How To Order

Standard # 10 Valve – Order OC1753



10 Bypass
Cartridge Valve

k. # 10 Bypass Control Solenoid Coil

- How To Order

For 12 volt – Order OC1754
For 24 volt – Order OC1756



10 Bypass Control
Solenoid Coil

l. 45mm Bore Cylinder Seal Kit

- How To Order

Order OC16SUK09